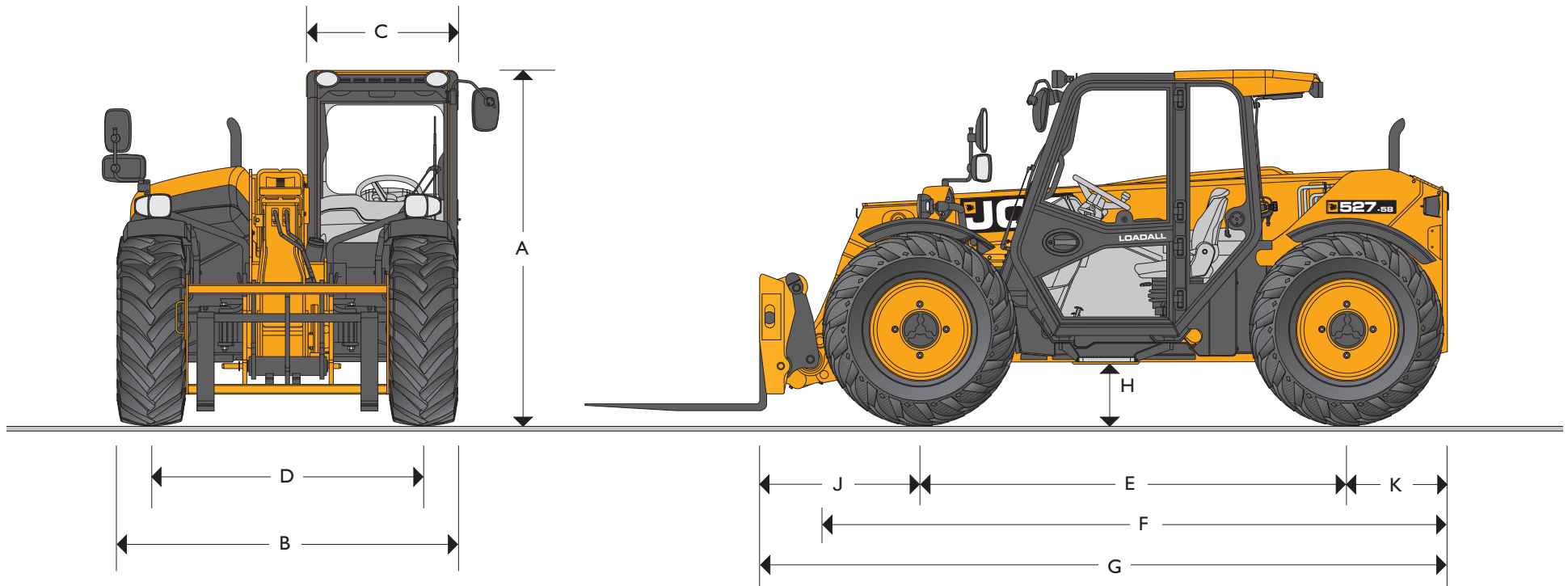


MAX PAYLOAD: 5,000 lb (2,273 kg) MAX LIFT HEIGHT: 19 ft 0 in (5.8 m)

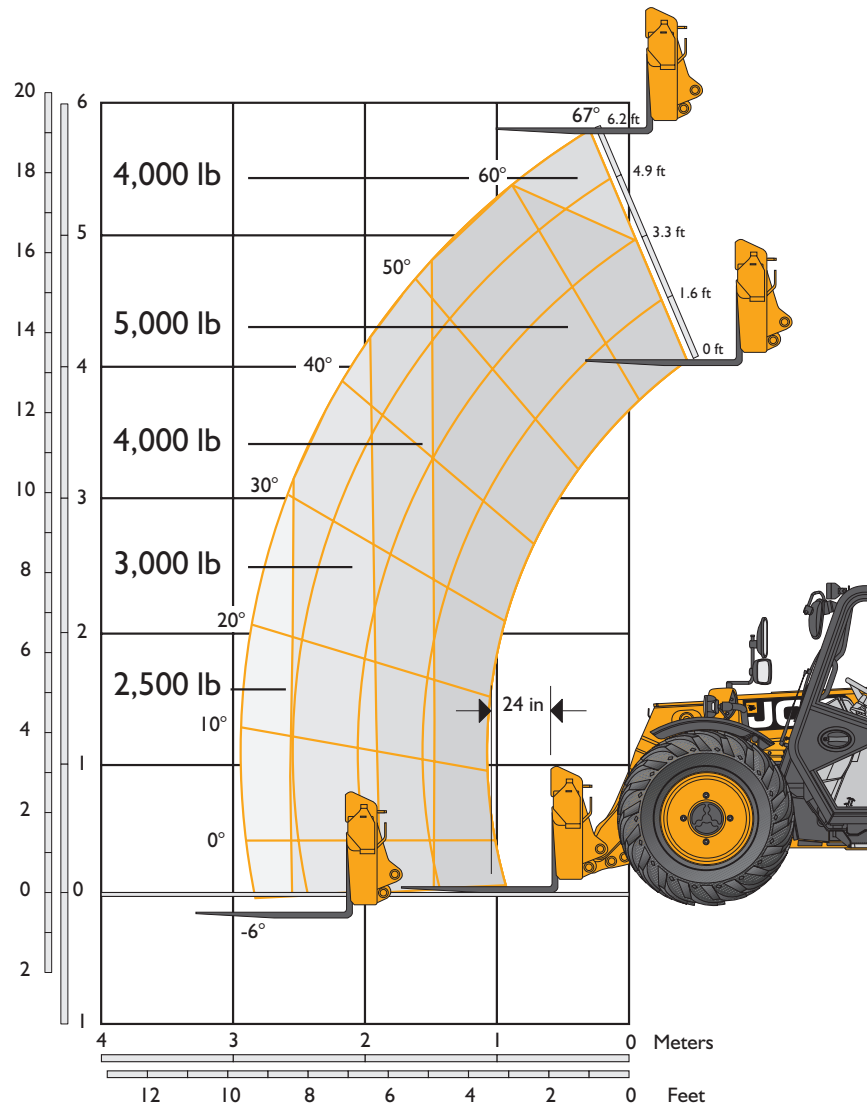


STATIC DIMENSIONS

	ft-in (m)		ft-in (m)
A Overall Height	6-7 (2.00)	K Rear Wheel Center to Rear Face	2-0 (0.61)
B Overall Width (over tires)*	6-8 (2.04)	Carriage Roll Back Angle	degrees 40
C Inside Width of Cab	2-11 (0.88)	Carriage Dump Angle	degrees 40
D Front Track	5-3 (1.60)	Outside Turn Radius (over tires) 4WS	10-4 (3.15)
E Wheelbase	8-7 (2.61)	Weight	lb (kg) 13,007 (5900)
F Overall Length to Front Tires	12-3 (3.73)	Tires	380/75 R20
G Overall Length to Front Carriage	14-6 (4.42)		
H Ground Clearance	1-0 (0.3)		
J Front Wheel Center to Carriage	3-11 (1.20)		

* Dependent upon tire specified.

LIFT PERFORMANCE



LIFT PERFORMANCE

Maximum Lift Capacity - 24" Load Center	lb (kg)	5000 (2273)
Lift Capacity to Full Height	lb (kg)	4000 (1814)
Lift Capacity at Full Reach	lb (kg)	2500 (1134)
Lift Height	ft-in (m)	19-0 (5.80)
Reach at Maximum Lift Height	ft-in (m)	1-1 (0.33)
Maximum Forward Reach	ft-in (m)	9-10 (3.00)

ENGINE

Latest technology and advanced design provides low fuel consumption, reduced noise, high torque and power output, total reliability and minimal maintenance. Two-stage, dry type air filter with primary and safety elements. Territory dependent.

		Stage III
Model		DieselMax
Manufacturer		JCB
Displacement	in ³ (l)	269 (4.4)
No of Cylinders		4
Bore Size	in (mm)	4.06 (103)
Stroke	in (mm)	5.20 (132)
Aspiration		Turbocharged Cooled
Power Rating		
Power @ 2200 rpm	hp (kW)	100 (74.2)
Torque Rating		
Torque @ 1300 rpm	lbf ft (Nm)	325 (440)



TRANSMISSION

Closed loop variable displacement pump with a continuously variable hydrostatic drive. Comprised of a mechanical gear box, hydraulic motor and control unit. Permanent 4 wheel drive. Travel speed: 19 mph (30 km/h).

BRAKES

Service Brakes – Hydraulically operated self-adjusting, oil-immersed in-board multi-disc type in front axle.

Parking Brake – Hand operated disc brake on output of gearbox.

BOOM AND CARRIAGE

Boom is manufactured from high tensile steel. Low maintenance, hard wearing pads. JCB Q-Fit carriage is standard.

SAFETY CHECK VALVES

Fitted to carriage tilt, telescopic and boom lift rams.

SERVICE CAPACITIES

Fuel Tank	gal (l)	19.3 (73)
Hydraulic Tank	gal (l)	17.4 (66)
Coolant	gal (l)	5.8 (22)

HYDRAULICS

Two stage gear pump, fitted with suction strainer and filter. One boom end auxiliary hydraulic service port fitted as standard.

Operating System Pressure	psi (bar)	3771 (260)
Flow at System Pressure @ 2200 rpm	gpm (l/min)	33.3 (126)
Hydraulic Cycle Times	Seconds	
Boom Raise		4.7
Boom Lower		3.4
Extend		4.9
Retract		2.8
Bucket Dump		2.2
Bucket Crowd		2.8

ELECTRICS

12 V negative earth. 95 AH heavy duty battery. 95 amp alternator. Full road lighting. Reversing light. Direction indicators. Hazard warning. Reverse alarm.

CAB

Quiet, safe and comfortable cab conforms to ROPS ISO 3471 and FOPS ISO 3449. Tinted glass all around, with laminated roof screen, roof bars, front screen and roof screen wipers and heater/screen defroster. Rear opening window with wash/wipe. Audio-visual warning system for coolant temperature, engine oil pressure, air cleaner, battery charge, transmission oil temperature and pressure, water in fuel, hourmeter, road speed indicator, fuel gauge, engine temperature, clock and inclinometer. Adjustable suspension seat, tilt steer column, park brake, floor mounted throttle and brake pedals.

Hydraulic Controls:

Single lever pilot servo joystick, incorporating forward/neutral/reverse, transmission disconnect, with progressive extend/retract and auxiliary incorporating constant flow facility.

STEERING

Hydrostatic power steering with power track rods on both axles.

Three Steer Mode Options: front wheel steer; all wheel steer; crab steer; operated from in the cab by a selection lever.

Option: In cab selector switch with Auto Align.

OPTIONS AND ACCESSORIES

Options: Variable speed control with hand throttle, front and rear working lights, rotating flashing beacon, front and roof screen guard, air conditioning, radial tires, 2 boom end auxiliary services, sun visor, radio kit, hydraulically-locking carriage, limited slip differential in front axle, air suspension seat, reversing fan. Smoothride, tow hook with trailer lighting package.

Attachments: Contact your local dealer for details of the comprehensive range.



A GLOBAL COMMITMENT TO QUALITY

JCB's total commitment to its products and customers has helped it grow from a one-man business into one of the world's largest manufacturers of backhoe loaders, crawler excavators, wheeled excavators, telescopic handlers, wheeled loaders, dump trucks, rough terrain fork lifts, industrial fork lifts, mini/midi excavators, skid steer loaders and tractors.

By making constant and massive investments in the latest production technology, the JCB factories have become some of the most advanced in the world.

By leading the field in innovative research and design, extensive testing and stringent quality control, JCB machines have become renowned all over the world for performance, value and reliability.

And with an extensive dealer sales and service network in over 150 countries, we aim to deliver the best customer support in the industry.

Through setting the standards by which others are judged, JCB has become one of the world's most impressive success stories.



JCB Headquarters Savannah, 2000 Bamford Blvd, Savannah, GA 31322 Tel: (912) 447-2000 Fax: (912) 447-2299 www.jcb.com

JCB reserves the right to change design, materials and/or specifications without notice. Specifications are applicable to units sold in the United States and Canada. The JCB logo is a registered trademark of J C Bamford Excavators Ltd.